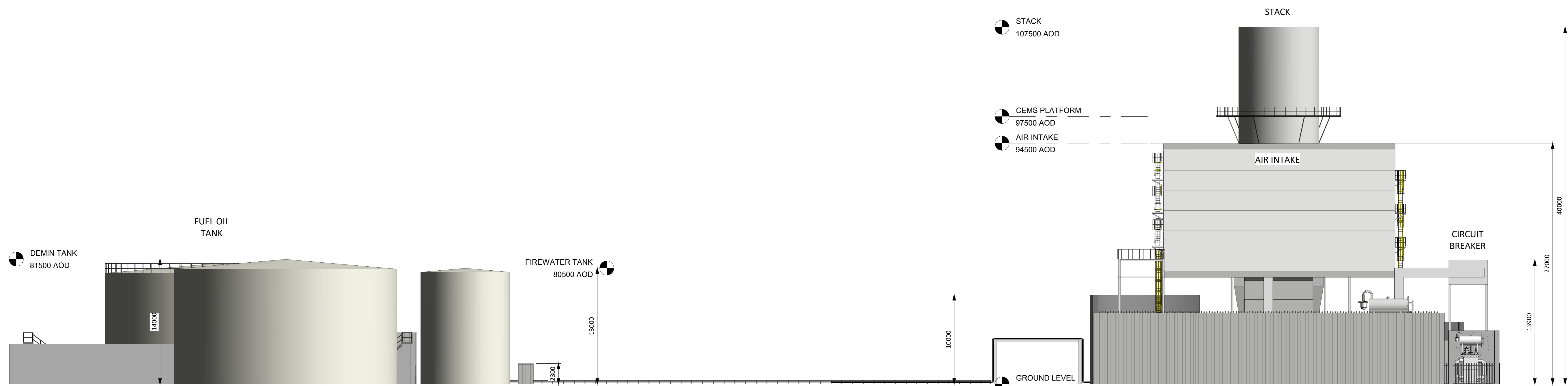
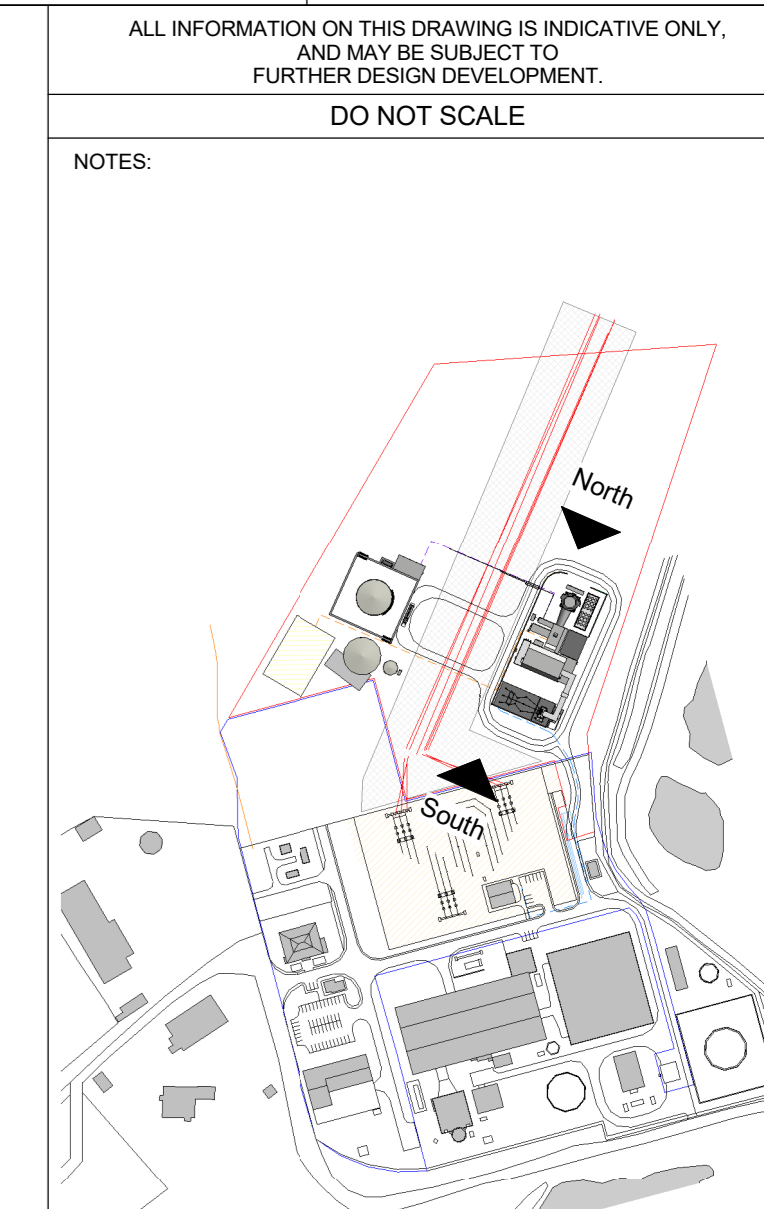


1 North  
1 : 200



2 South  
1 : 200



OCGT Key Plan  
1 : 5000

ALL INFORMATION ON THIS DRAWING IS INDICATIVE ONLY,  
AND MAY BE SUBJECT TO  
FURTHER DESIGN DEVELOPMENT.  
DO NOT SCALE

NOTES:

|      |                     |       |      |      |          |
|------|---------------------|-------|------|------|----------|
| R4.0 | PRELIMINARY         | EMC   | A01  | HHE  | 08.02.23 |
| R3.0 | PRELIMINARY         | DTW   | A01  | HHE  | 05.01.23 |
| R2.0 | PRELIMINARY         | DTW   | A01  | HHE  | 05.01.23 |
| R1.0 | PRELIMINARY         | DTW   | A01  | HHE  | 22.12.22 |
| REV. | DETAILS OF REVISION | DRAWN | CHKD | APPN | DATE     |

**FICTNER**  
CONSULTING ENGINEERS LIMITED  
92 George's Street Lower  
Dun Laoghaire  
Co. Dublin, A99 V9R6  
Tel: +353 (0)1 506 9652  
Website: www.fictner.ie

CLIENT: EPED  
SITE: TYNAGH NORTH  
PROJECT: TYNAGH NORTH  
TITLE: OCGT NORTH & SOUTH ELEVATIONS

|                 |  |                  |          |
|-----------------|--|------------------|----------|
| DRAWING STATUS: | FOR PLANNING                             | DATE:            | 14.12.22 |
| DRAWN BY:       | DTW                                      | CHECKED BY:      | A01      |
| APPROVED BY:    | HHE                                      | DATE:            | 14.12.22 |
| FILENAME:       | S3577-8310-0001DW Tynagh North OCGT R1.0 | OFFICE OF ISSUE: | DUBLIN   |
| DRAWING No.:    | S3577-8330-0002                          | SCALE:           | 1:200    |
| REVISION:       |  | REVISION:        |          |

